

# WOOD PELLET-MILL

## AFFORDABLE, VERSATILE AND PRODUCTIVE



### + AREAS OF APPLICATION

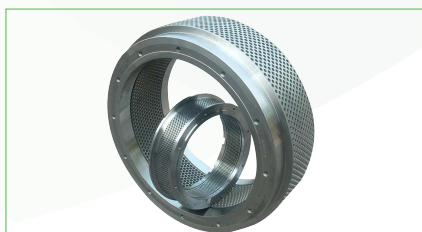
The RICHI Machinery MZLH Series Wood Pellet Mill is perfectly suited for materials that already have a fine granularity or have been pre-shred such as, saw dust, shavings, fermentation residue, spelt or dried fruit or vegetable pomace. The straight-forward design and the powerful engine make for high-performing and user-friendly machine. As an option all contact surface with the material are available in stainless steel for highest hygiene standards.

### + ADVANTAGES

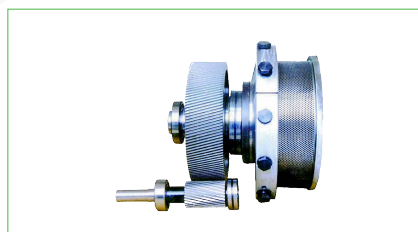
- + Compact in Size
- + High value added due to upcycling of raw materials
- + Easy to use
- + Different support platforms available

### + RICHI WOOD PELLET-MILL

RICHI MZLH series wood pellet machine is a multi-functional pellet production equipment, suitable for all kinds of wood waste and biomass materials. Design focuses on robustness and productivity. We have exported to more than 110 countries or regions. Provide overseas installation services and complete training services. Starting a pellet production business starts with contacting RICHI.



RING-DIE

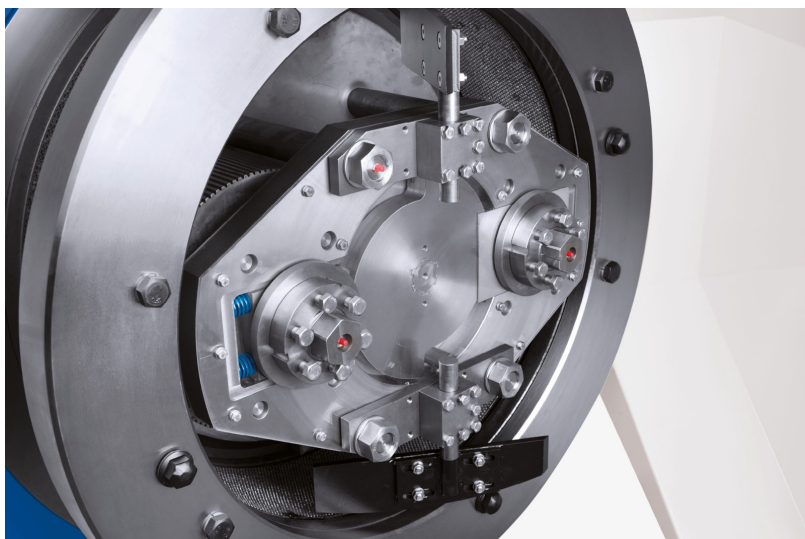


RING DIE KIT



PRESS ROLLER

## + SPECIFICATIONS



Model	MZLH320	MZLH350	MZLH420	MZLH520	MZLH768	MZLH858
Anti-caking Feeder Power	1.5KW	1.5KW	1.5KW	2.2KW	3KW	3KW
Forced Feeder Power	0.55KW	0.55KW	0.55KW	0.75KW	1KW	1KW
Pellet Machine Power	37KW	55KW	90KW	132KW	250KW	280KW
Capacity(wood sawdust,biomass)	300-400KG/H	500-700KG/H	1.0-1.2 T/H	2.0-2.5 T/H	2.5-4 T/H	3-4.5 T/H
Capacity(grass,straw)	600-800KG/H	800-1000KG/H	1.5-2 T/H	3-4 T/H	5-7 T/H	8-10 T/H
Capacity(organic fertilizer)	1-2 T/H	3-4 T/H	5-6 T/H	7-8 T/H	9-10 T/H	10-12 T/H
Final Pellet	6-12mm	6-12mm	6-12mm	6-12mm	6-12mm	6-12mm
Weight(KG)	2500	3500	4000	4500	5000	5500
Dimension(mm)	2200*900*1300	2500*1100*1600	2800*1150*1730	3000*1260*1860	3300*1500*2000	3500*1600*2180